



NAVNIRMAN

MANAGE PROJECTS EASILY

SOLUTION OVERVIEW

Project Management attributes like planning, budgeting, coordination, and control from inception demand precision. Our solution aimed for those enterprises who wish to determine project viability at all stages keeping close track on all activities.

NAV NIRMAN helps enterprises in delivering Project On-Time.



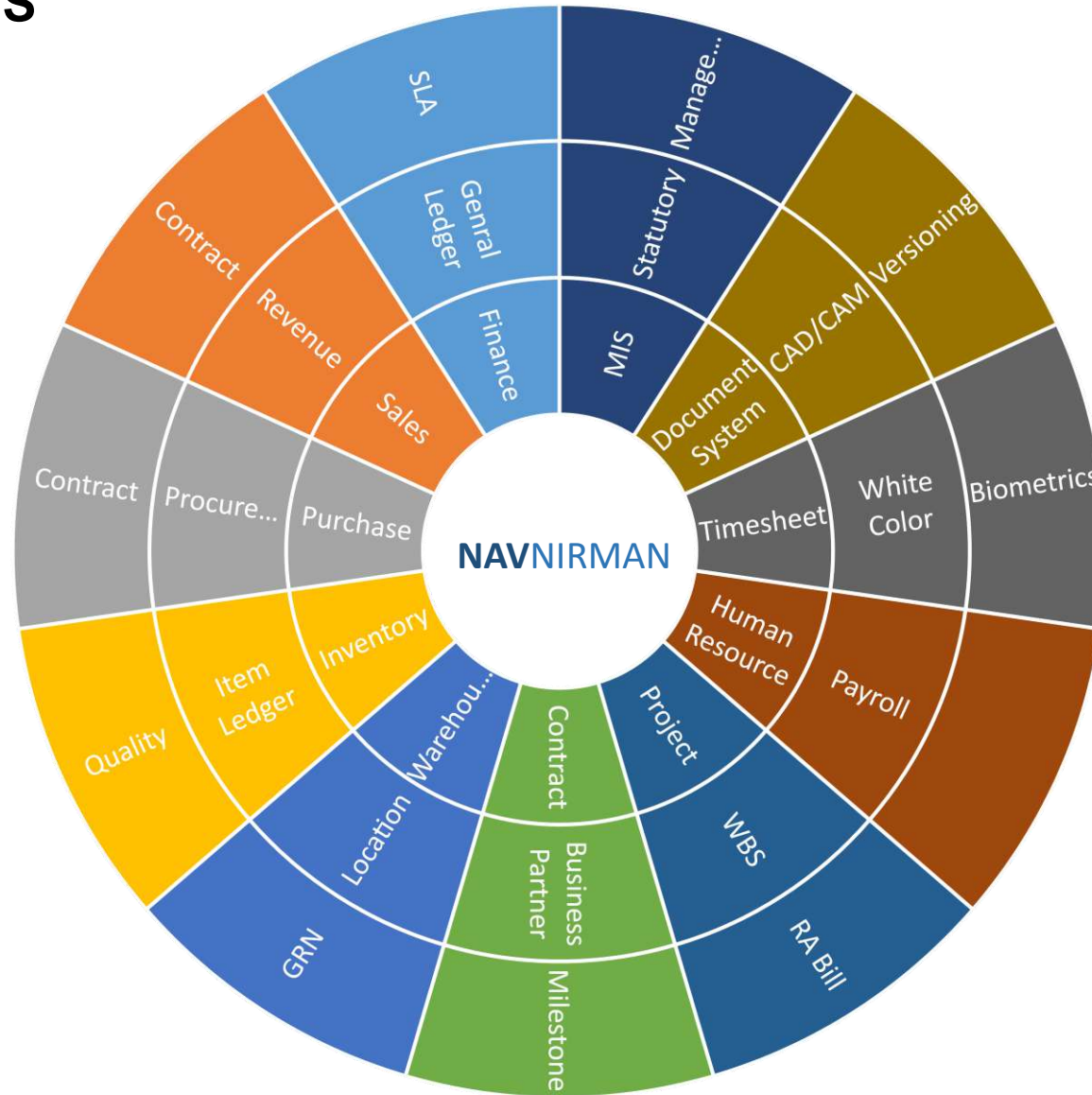
PURPOSE STATEMENT

NAV NIRMAN is an add-on solution built on Microsoft Dynamics NAV & Dynamics 365 for those Enterprise who are into Construction & Project Management.

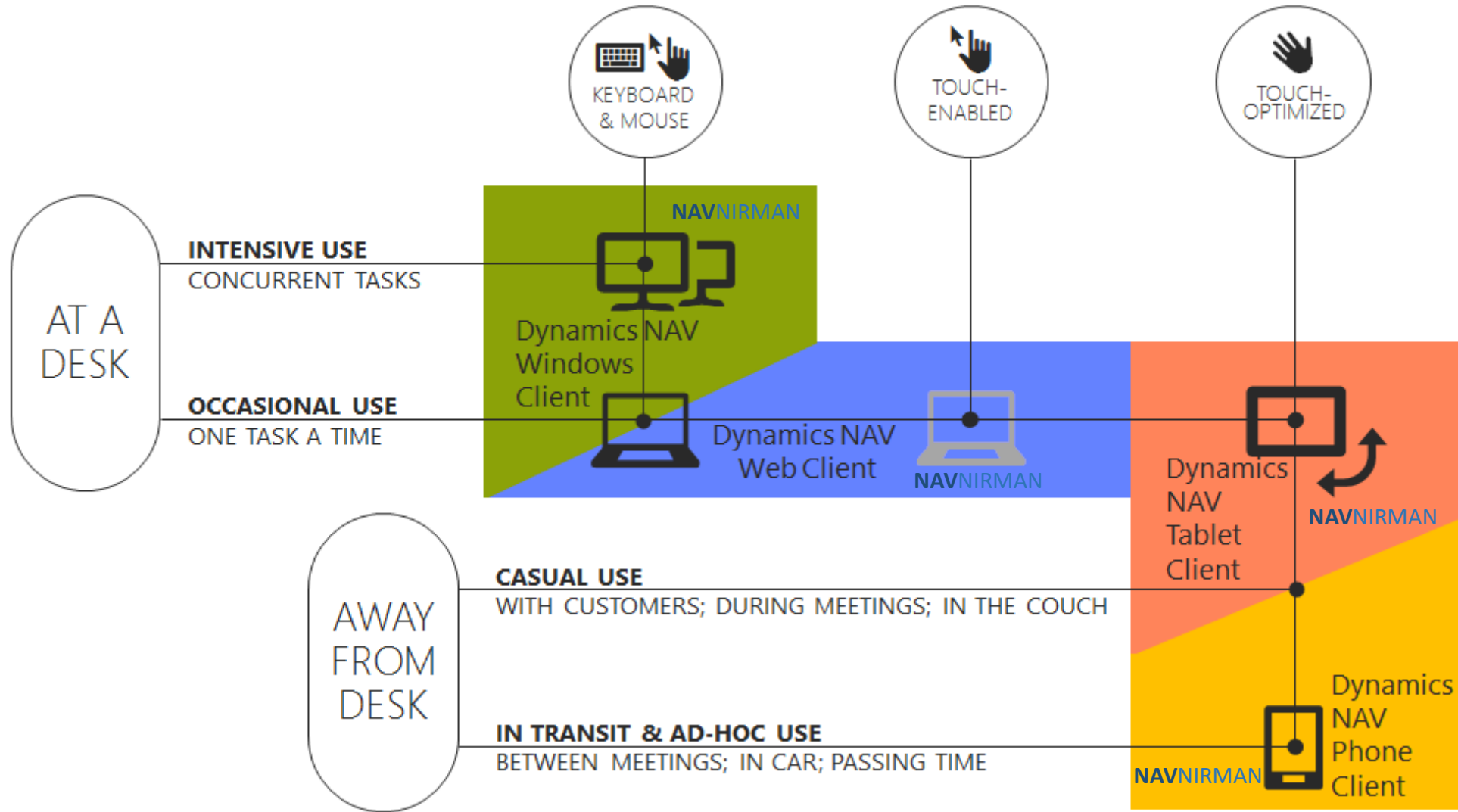
Prudence Technology provides innovative solutions on Oracle & Microsoft platform that make customers successful

WORK MADE SIMPLE

SOLUTION COMPONENTS

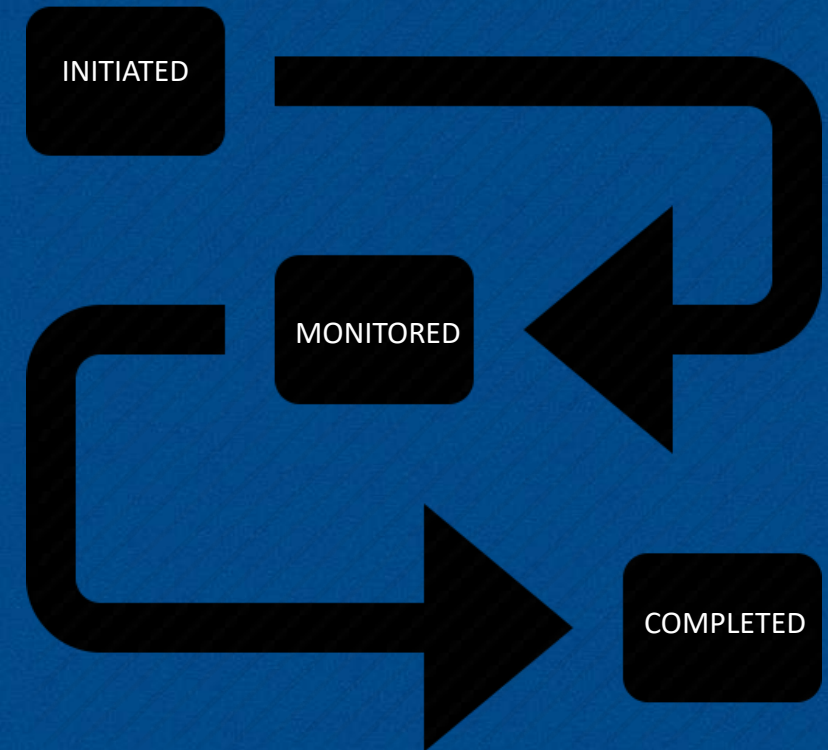


BUILT ON SOA ARCHITECTURE

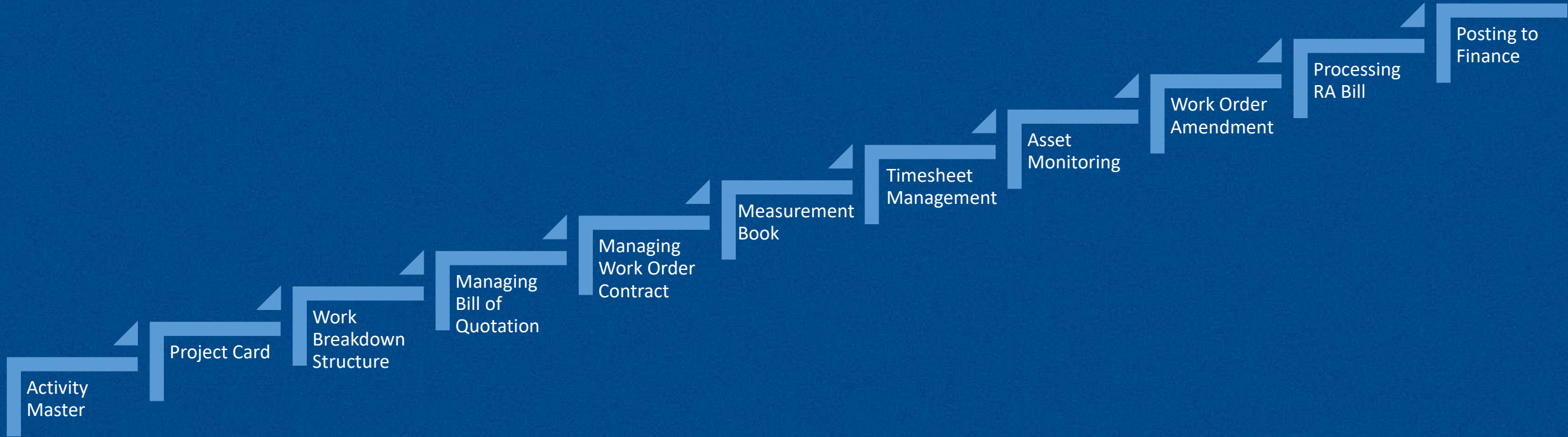


COMPLETE INTEGRATED SOLUTION

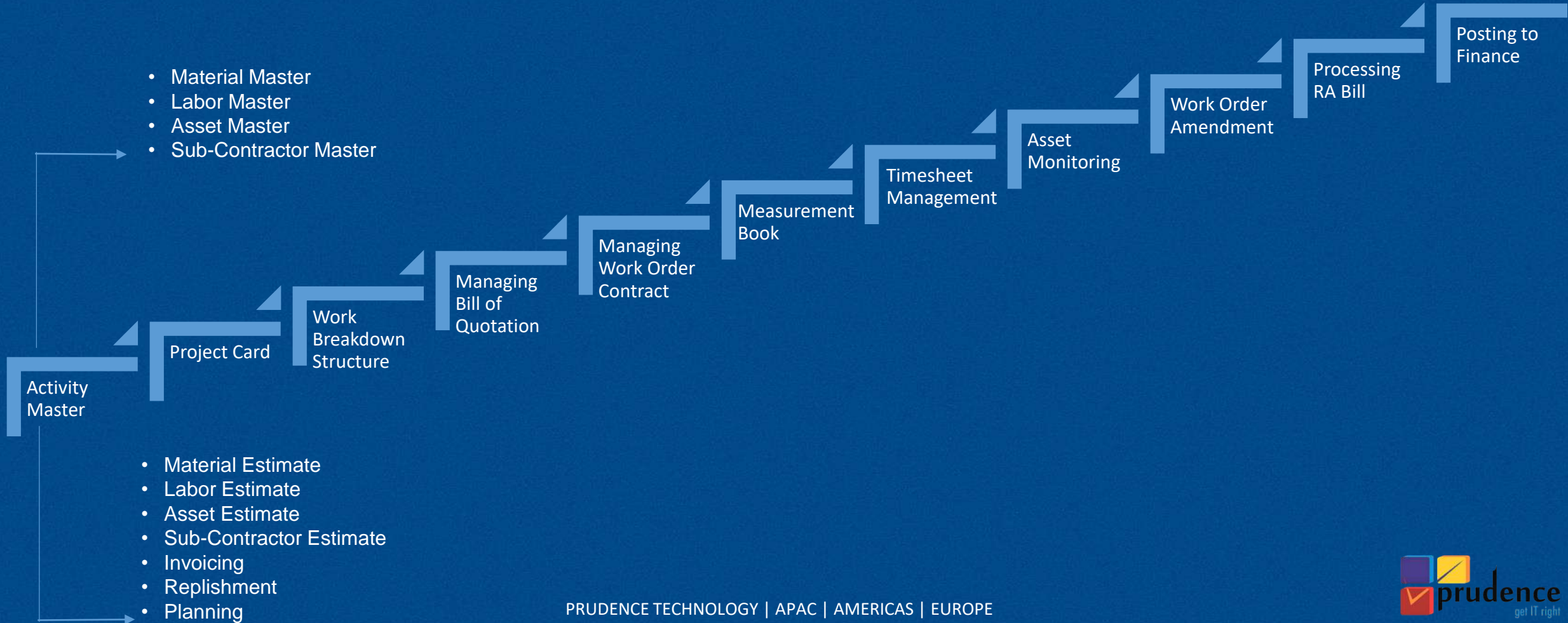
- Comprehensive Solution for Construction Vertical
- Manage projects easily & effectively
- Microsoft Dynamics Framework
- Real time integration with Complete Microsoft Dynamics
- Project Accounting & Billing
- Tender Management
- Contract Management
- Real Time Operational & Asset visibility
- Single source of Truth
- Management Information Summary



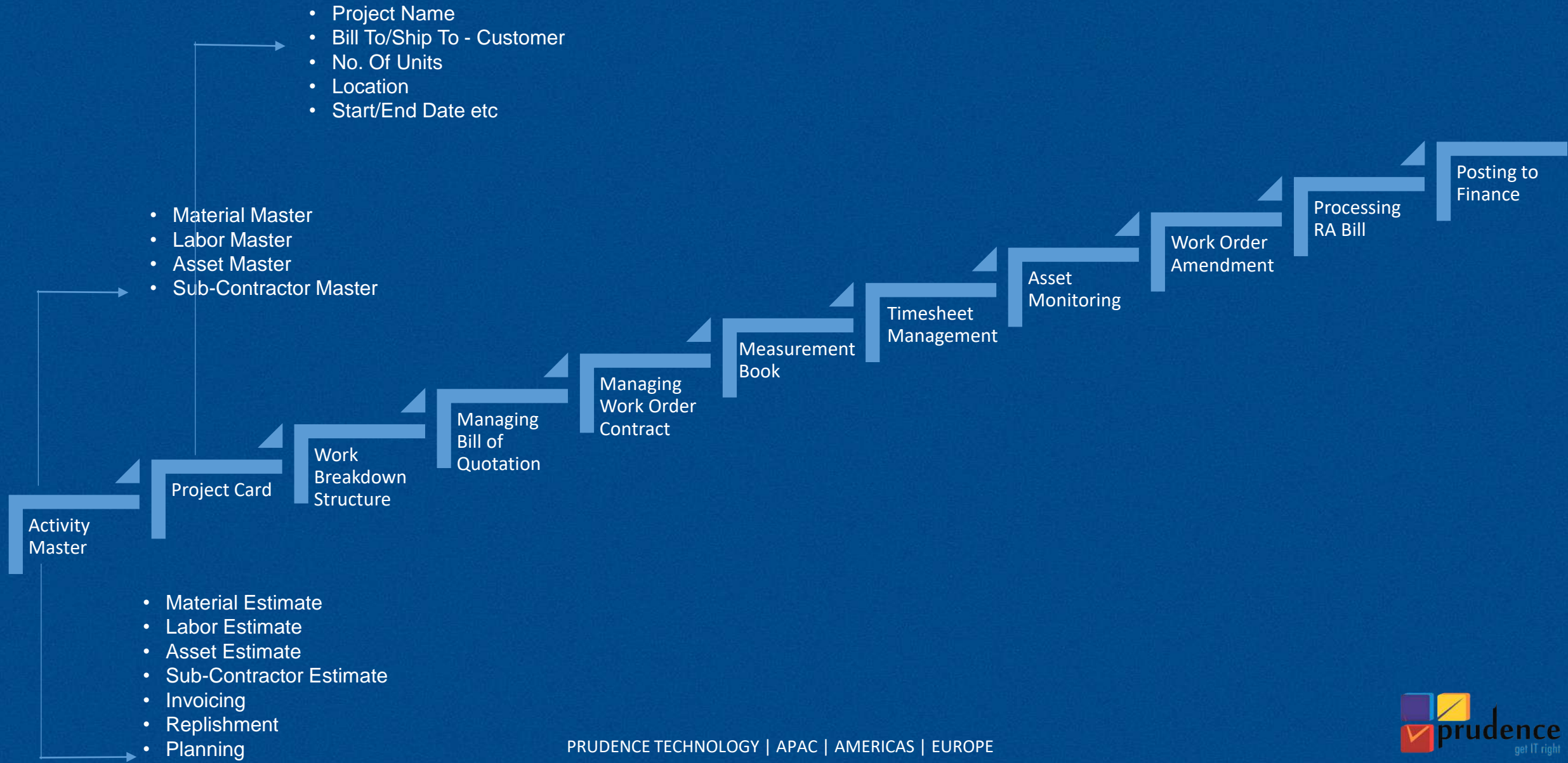
SOLUTION WORKFLOW



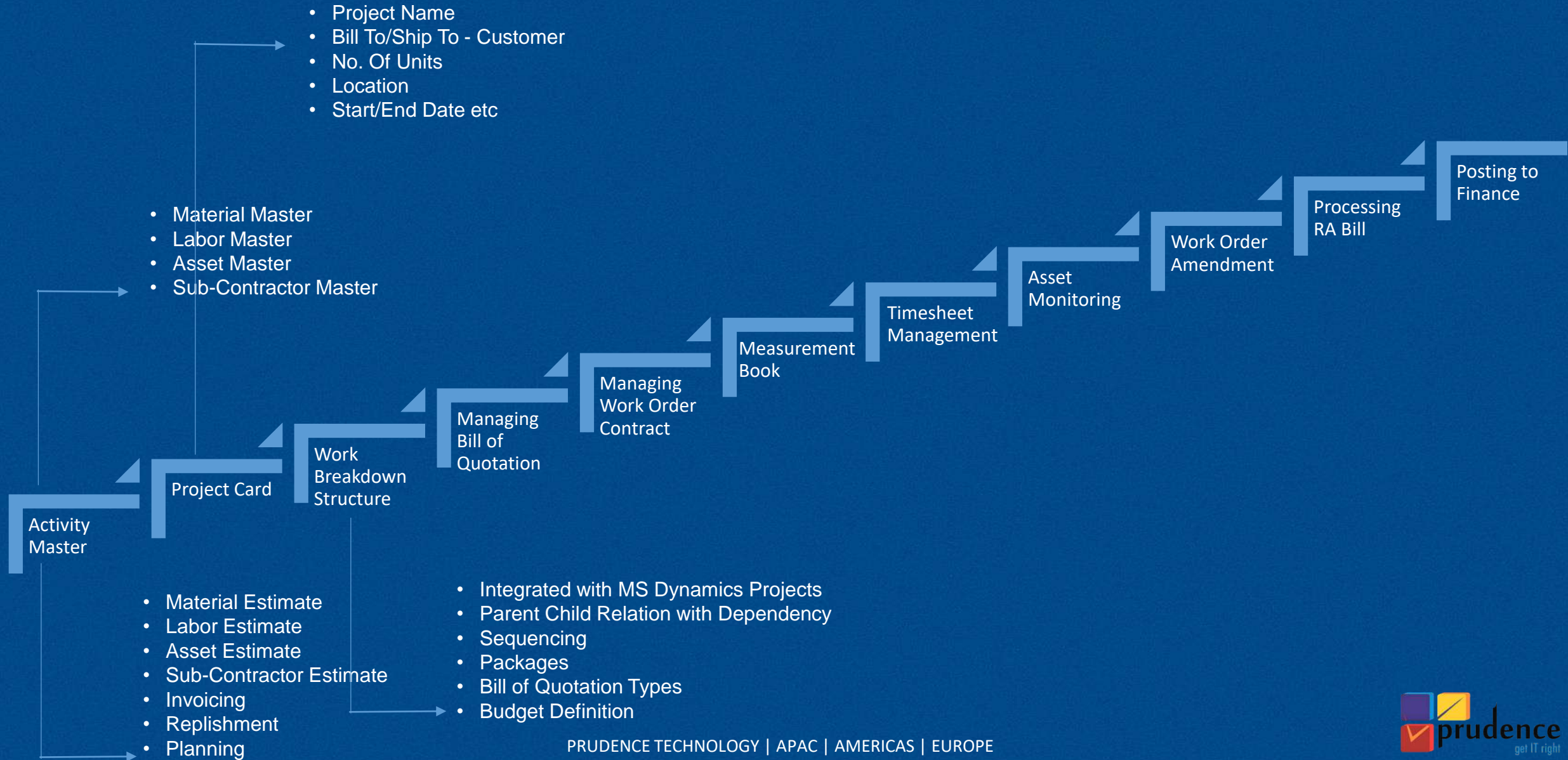
SOLUTION WORKFLOW



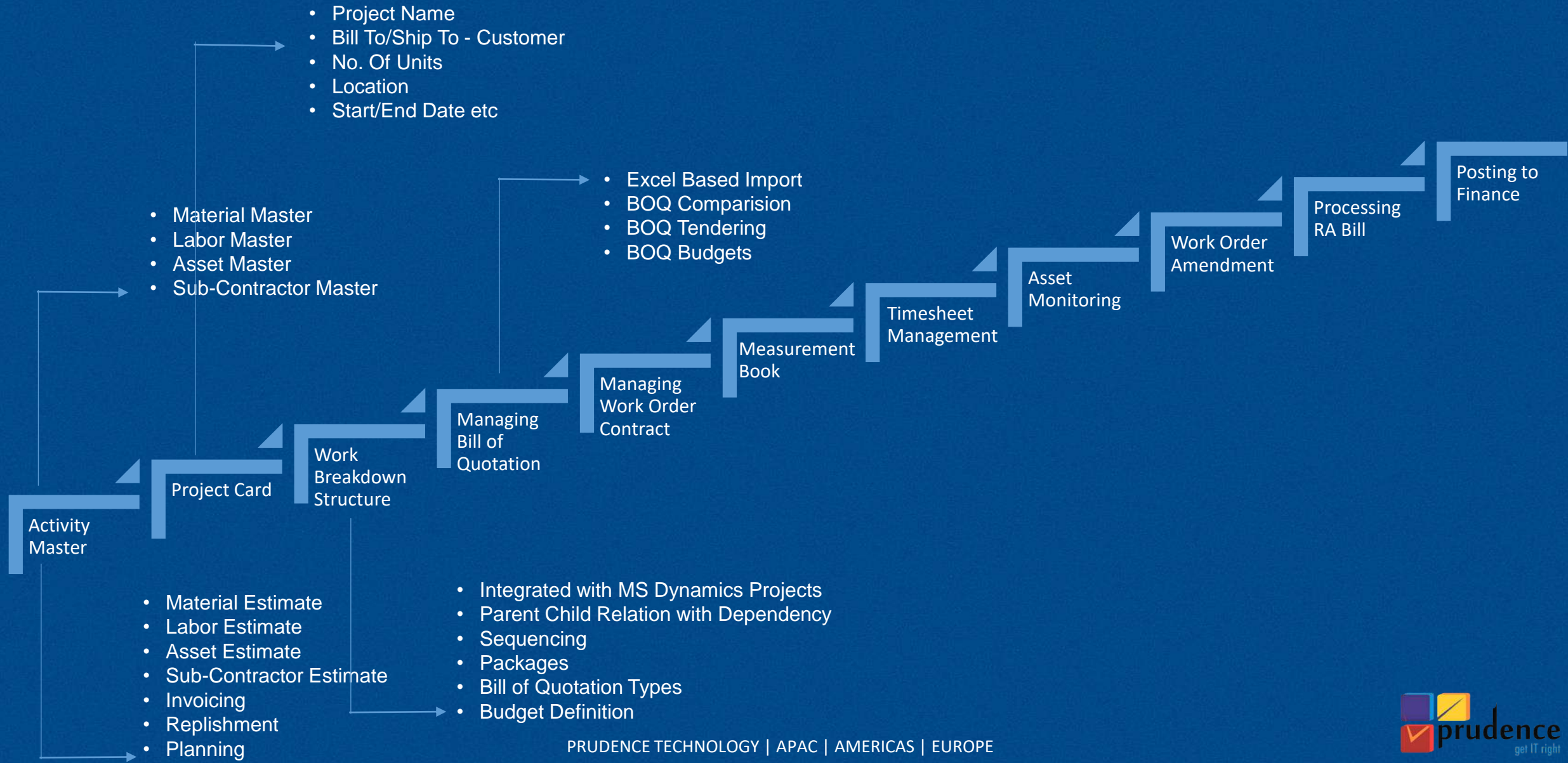
SOLUTION WORKFLOW



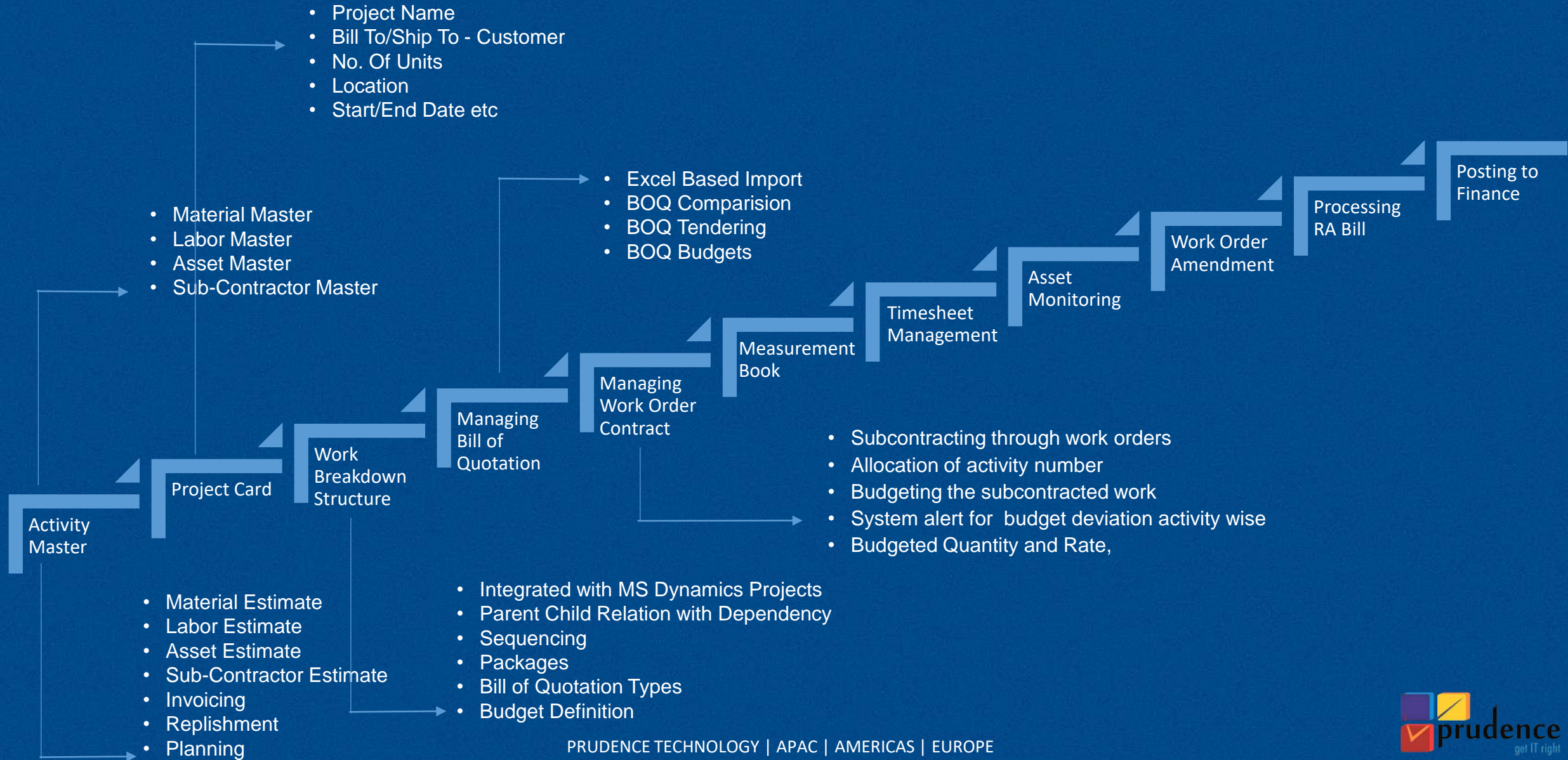
SOLUTION WORKFLOW



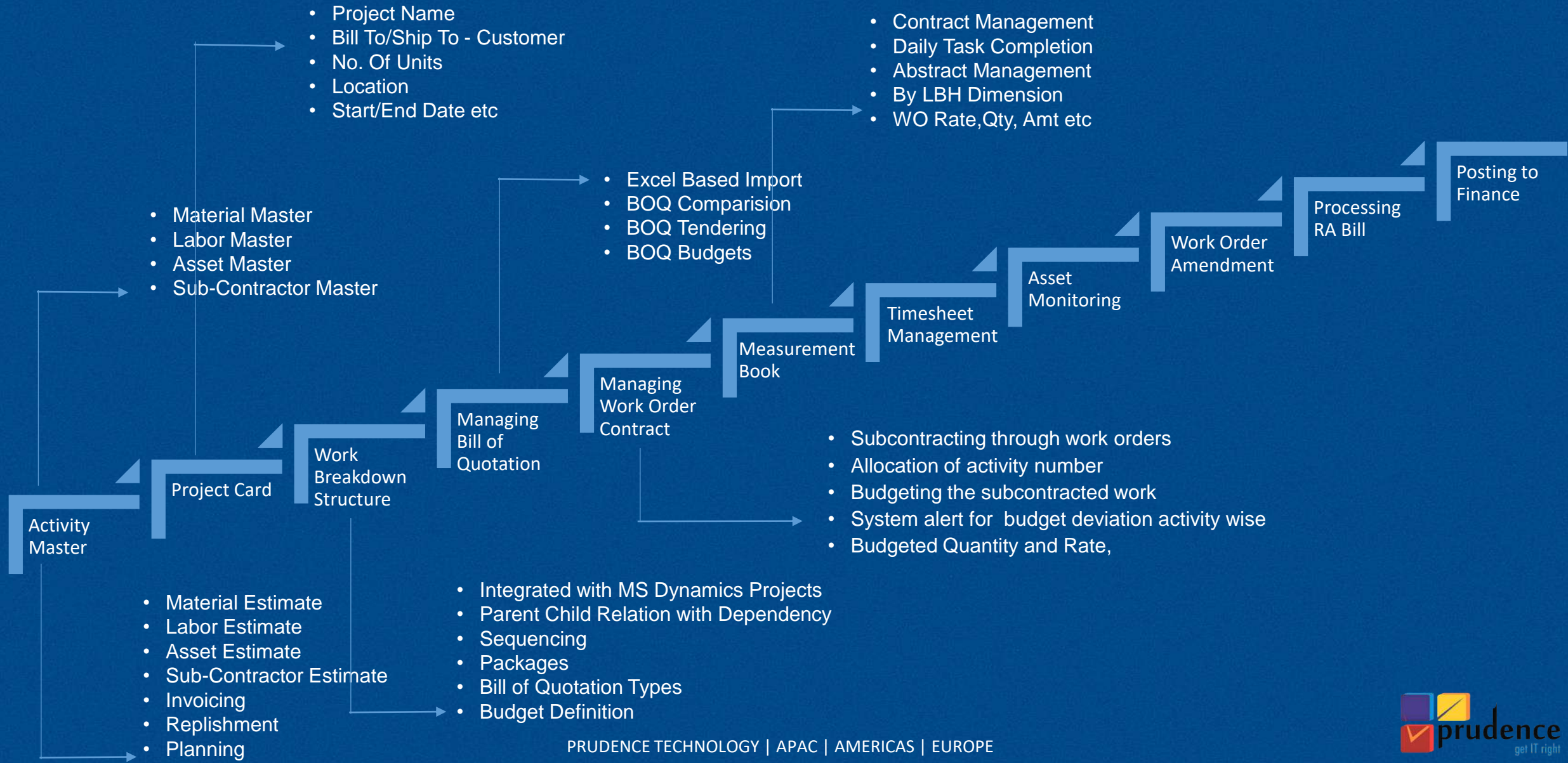
SOLUTION WORKFLOW



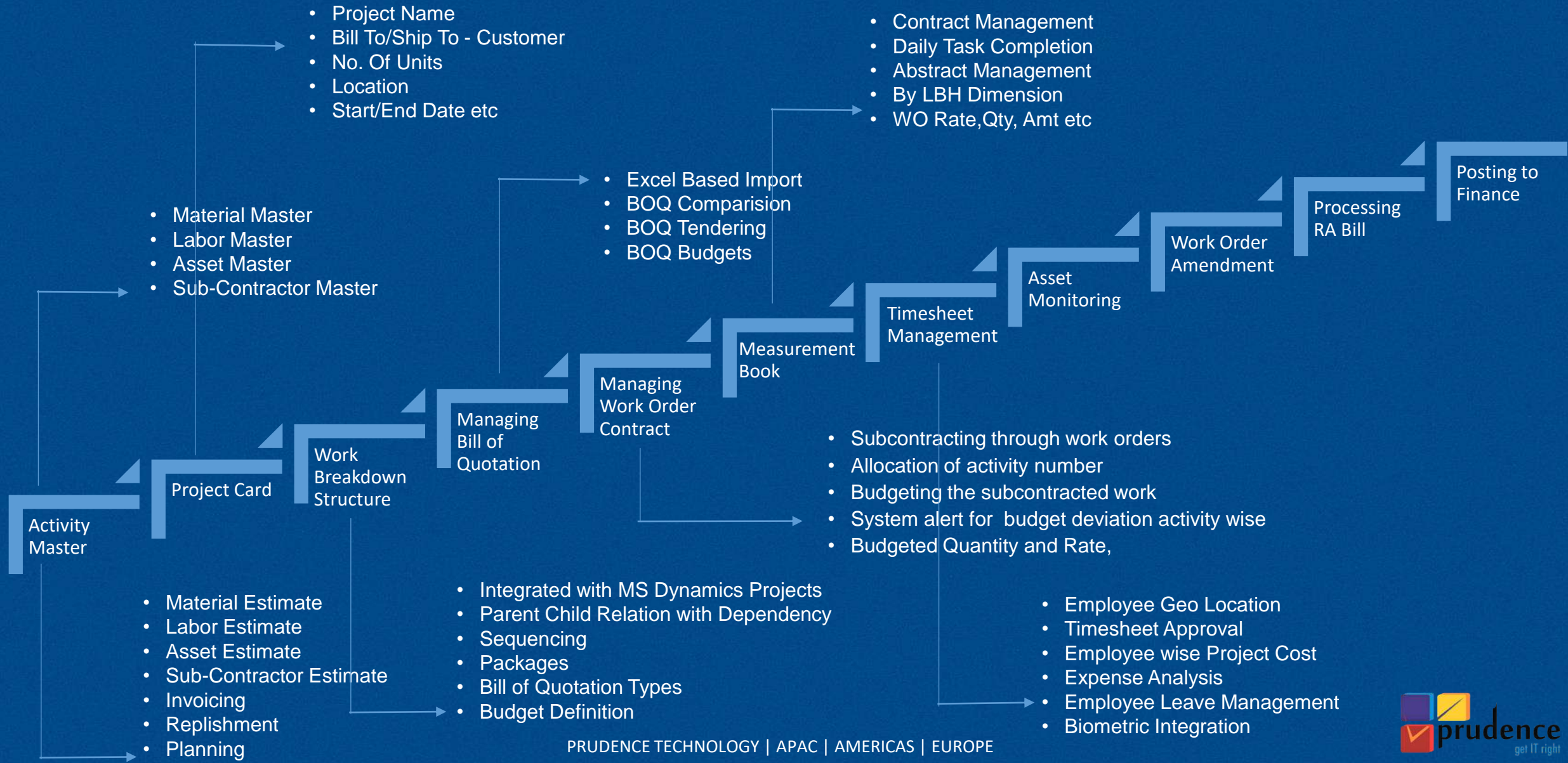
SOLUTION WORKFLOW



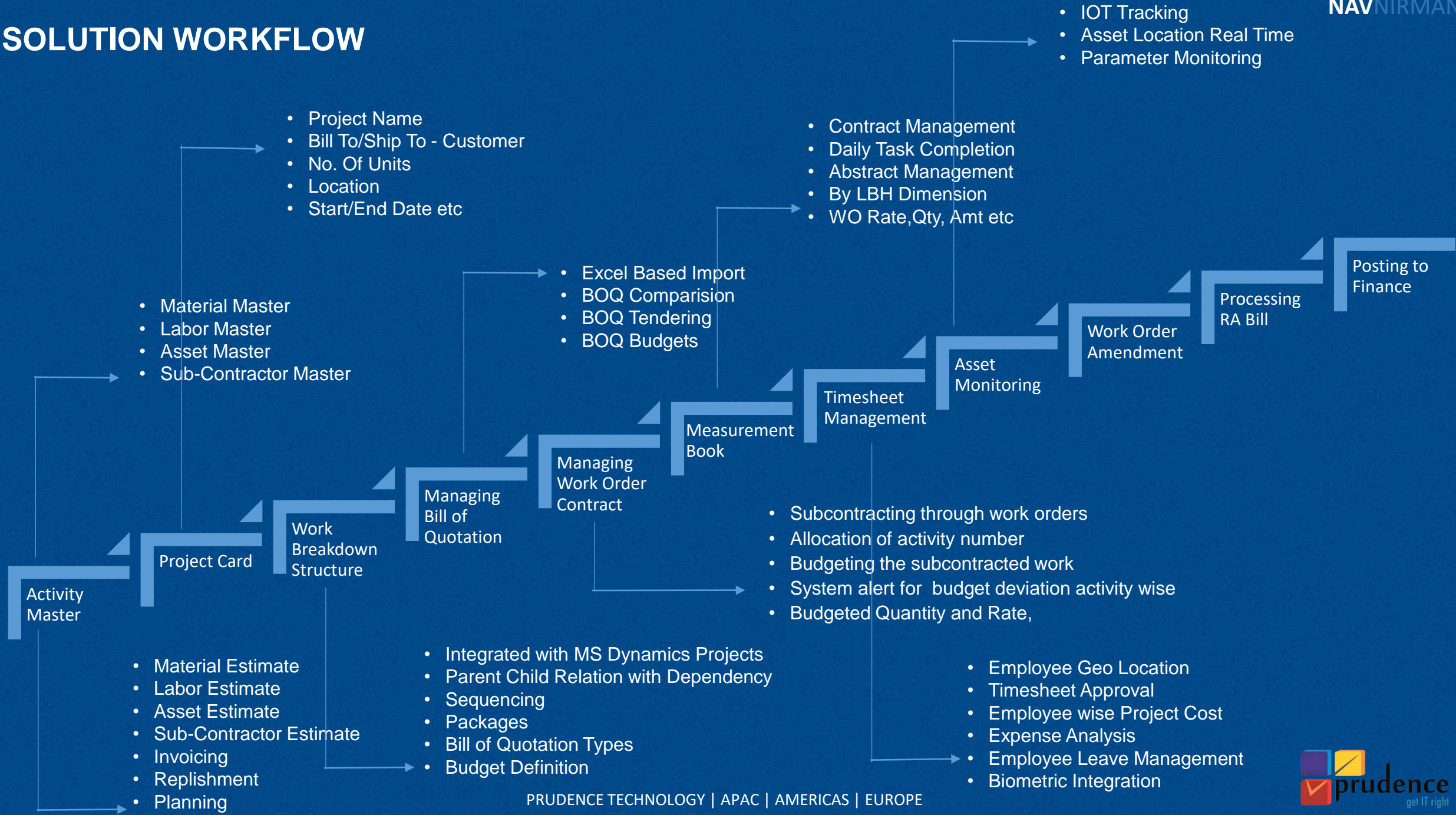
SOLUTION WORKFLOW



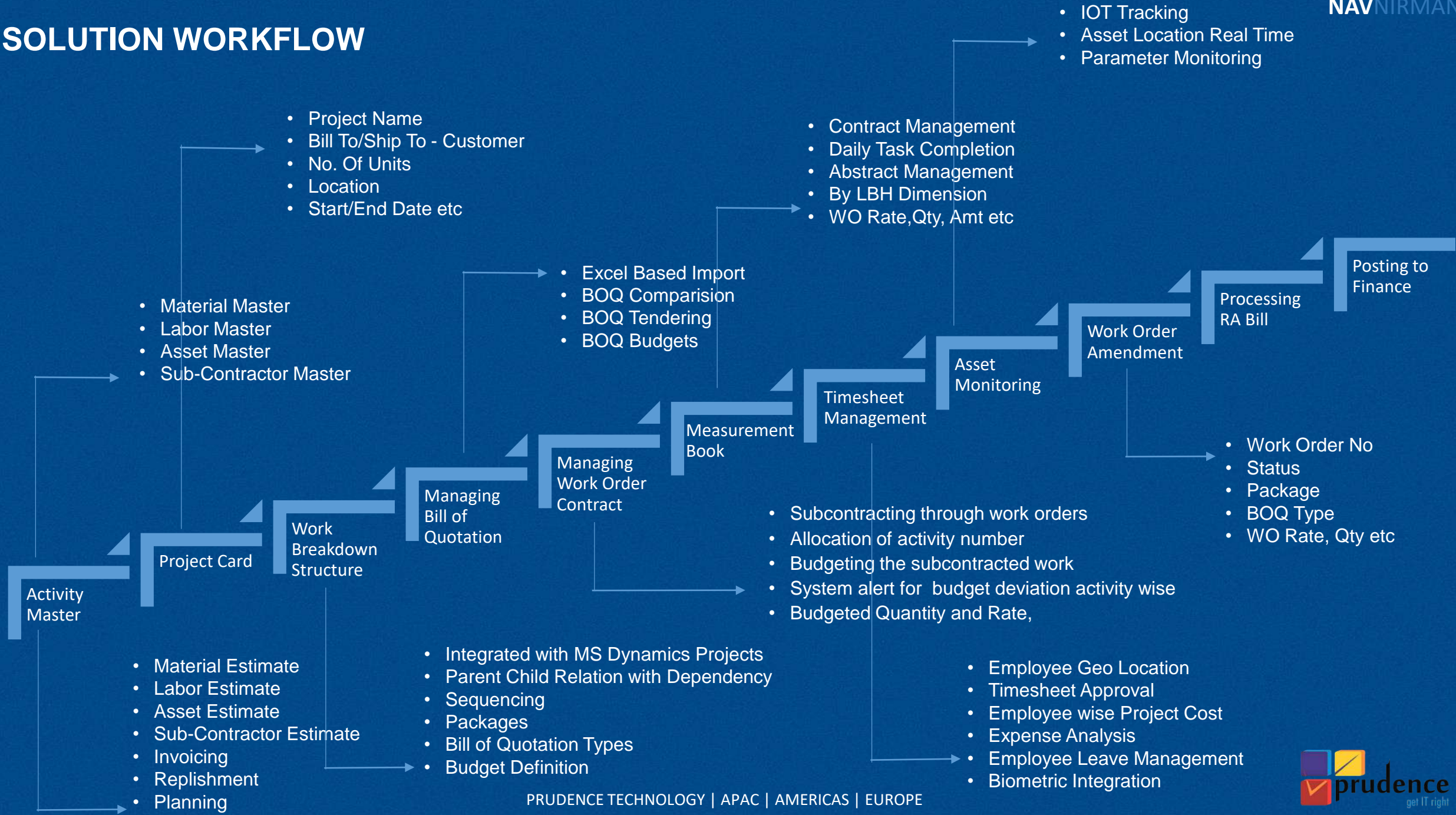
SOLUTION WORKFLOW



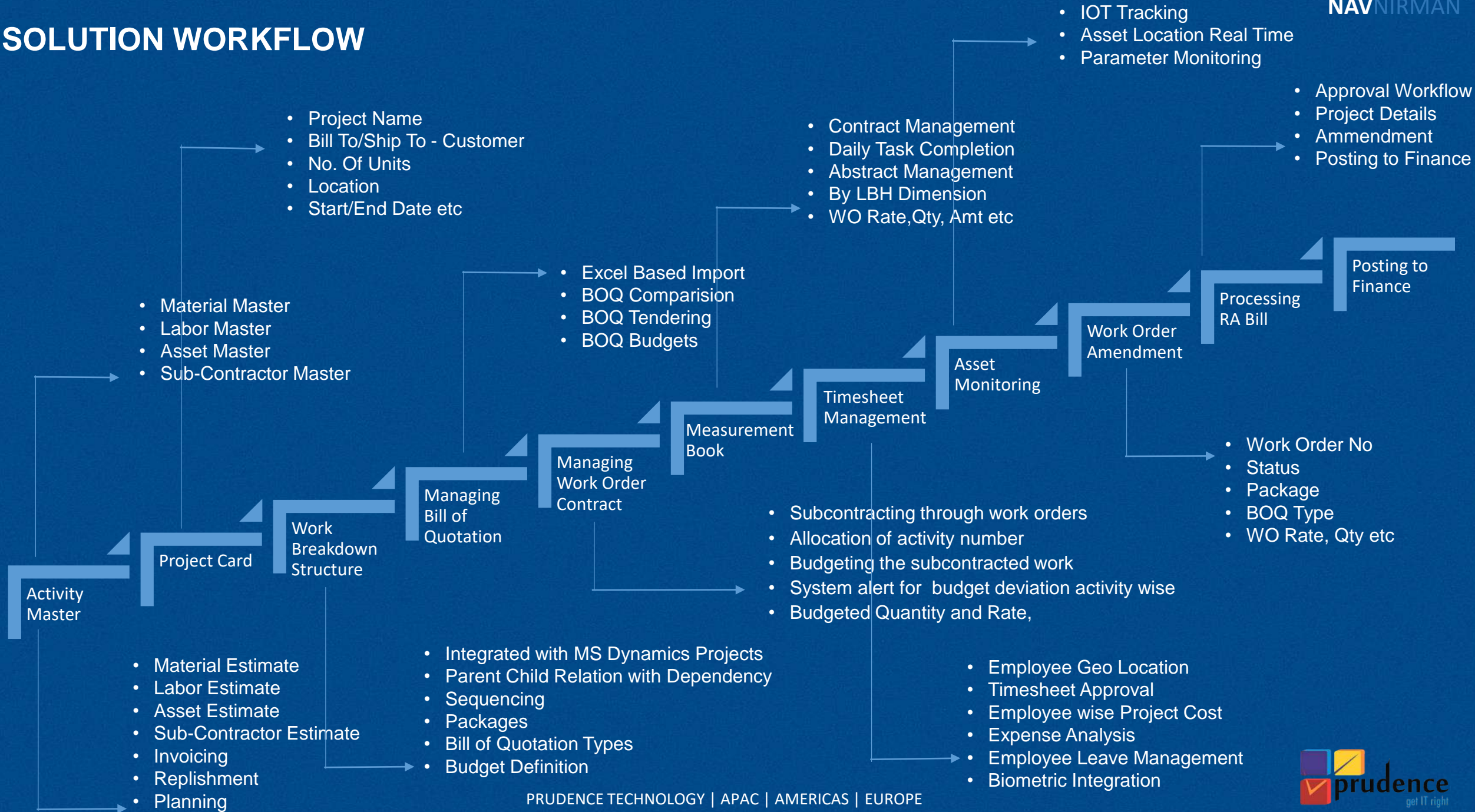
SOLUTION WORKFLOW



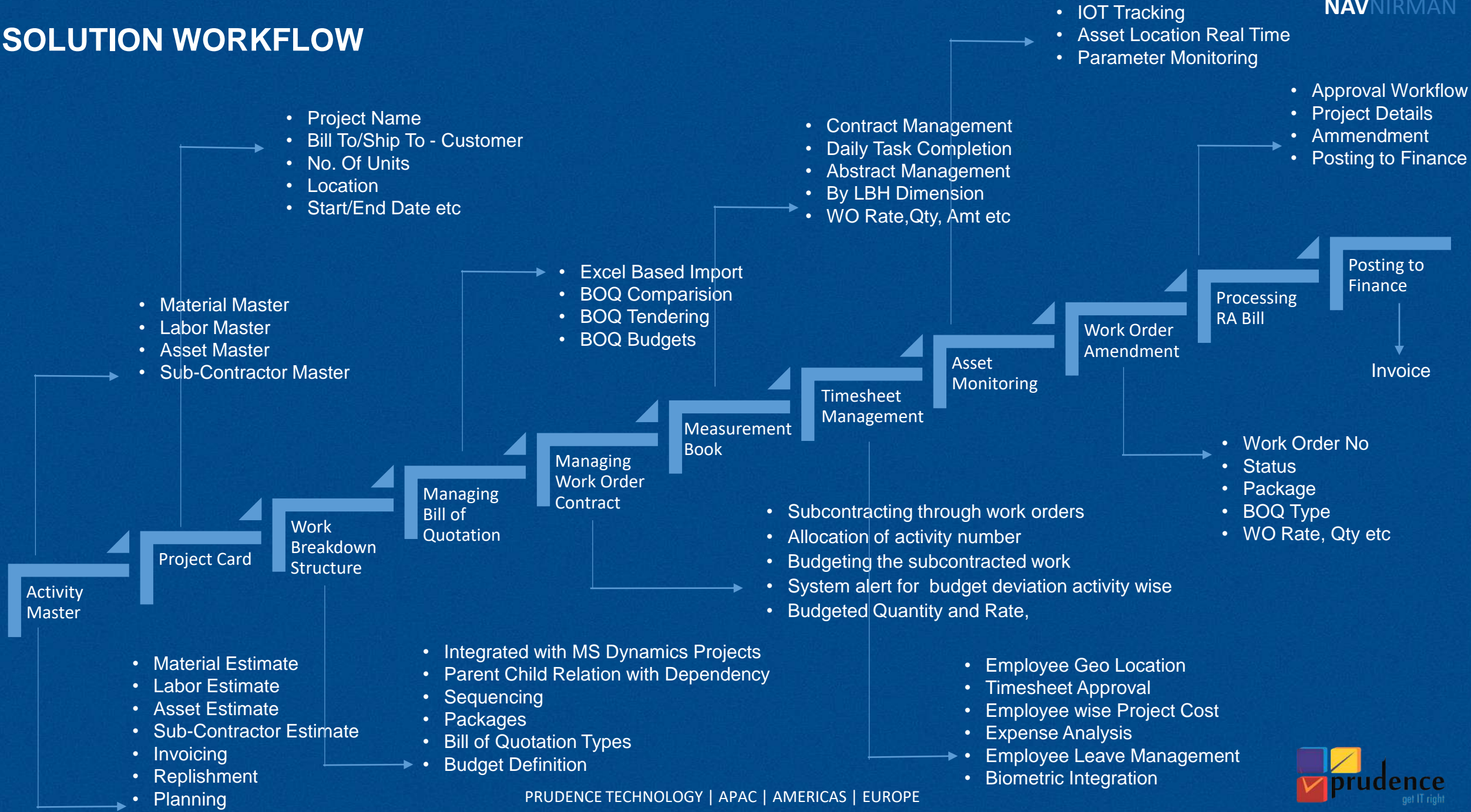
SOLUTION WORKFLOW

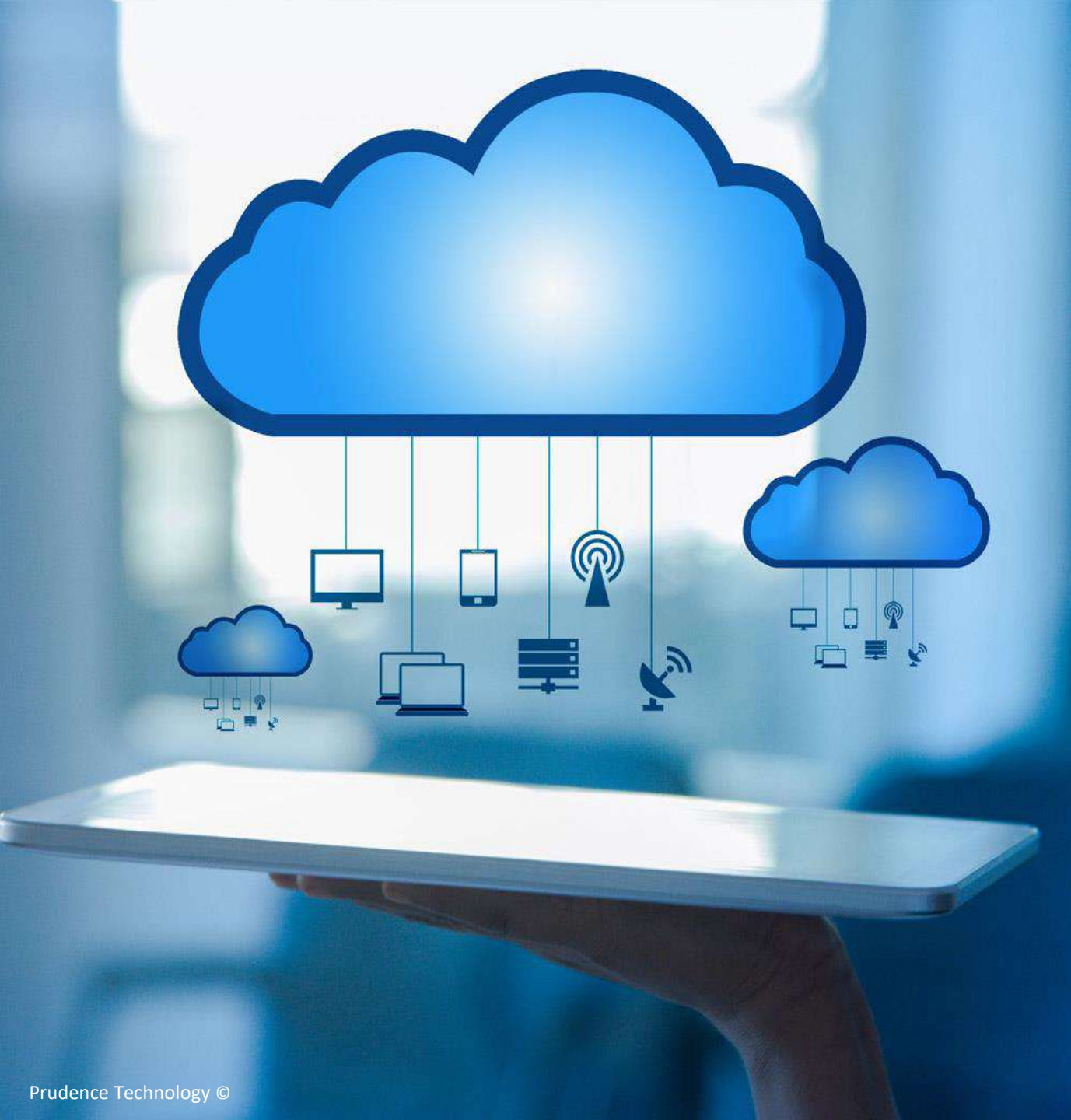


SOLUTION WORKFLOW



SOLUTION WORKFLOW





MICROSOFT DYNAMICS NAV

STARTER PACK

✓ Finance



✓ Distribution



The Starter Pack gives customers core Financials and Distribution functionality, plus three Full User licenses. The functionality included in the Starter Pack is designed to help customers:

The functionality included in the Starter Pack is designed to help customers:

- Gain control and insights over their finances
- Manage sales items and materials in a distribution environment
- Provide licensed users a singular view of the business from virtually anywhere through a variety of clients.

A customer needs to license one Starter Pack per ERP Solution deployment. For many customers, this is the only Microsoft Dynamics license component they will need.

Financial Management		
Basic General Ledger	Basic Fixed Assets	Electronic Payment / Direct Debits
Allocations	Insurance	Reconciliation of Bank Transactions
Budgets	Maintenance	Payment Handling
Account Schedules	Fixed Assets Allocations	Basic Dimensions
Consolidation	Reclassifications	Advanced Dimensions
Basic XBRL	Bank Account Management	Deferrals
Change Log	Check Writing	Multiple Currencies
Cash Flow Forecast	Bank Account Reconciliation	Employee Ledger Entry
Customer Relationship Management		
Contact Management	Campaign Management	Dynamics CRM integration
Task Management	Opportunity Management	Relationship Management (new)
Outlook Client Integration	Interaction / Document Management	Notifications (new)
Contact Classification	Mail Logging for MS Exchange	
Project Management		
Basic Resources	Estimates	Time Sheet
Capacity Management	Tasks / Steps	User Tasks
Multiple Costs	Jobs	
Supply Chain Management		
Basic Receivables	Requisition Management	Item Cross References
Sales Invoicing	Alternative Order Addresses	Nonstock Items
Sales Order Management	Purchase Return Order Management	Item Tracking
Sales Invoice Discounts	Purchase Line Discounting	Item Charges
Alternative Ship-To Addresses	Purchase Line Pricing	Bin
Shipping Agents	Drop Shipments	Pick
Sales Return Order Management	Salespeople / Purchasers	Analysis Reports
Sales Line Discounting	Basic Inventory	Item Budgets
Sales Line Pricing	Multiple Locations	Workflow
Sales Tax	Stock keeping Units	Document Management, Document Capture and OCR
Basic Payables	Alternative Vendors	E-services
Purchase Invoicing	Assembly Management	Item Categories (new)
Purchase Order Management	Location Transfers	Item Attributes (new)
Purchase Invoice Discounts	Item Substitutions	

EXTENDED PACK

- ✓ Manufacturing 
- ✓ Warehousing 
- ✓ Professional Services 

The **Extended Pack** adds functionality that allows customers to integrate core financials and distribution management with industry specific functionality extensions such as:

- Manufacturing to support and control the manufacturing environment
- Warehousing to manage the warehouse to support operations
- Professional Services to manage the billable generated by consultants
- Basic Customer Relationship Management (CRM) to manage customer and supplier relationships and offer the highest quality of service and support.

Advanced Financial Management		
Responsibility Centers	Inter-company Postings	Cost Accounting
Customer Relationship Management		
Service Order Management	Service Item Management	Planning and Dispatching
Service Price Management	Service Contract Management	
Warehouse Management		
Order Promising	Put Away	Warehouse Management Systems
Calendars	Warehouse Receipt	Internal Picks and Put Aways
Campaign Pricing	Warehouse Shipment	Automated Data Capture System
Cycle Counting	Standard Cost Worksheet	Bin Set-Up
Manufacturing		
Production Orders	Basic Supply Planning	Finite Loading
Production Bill of Materials	Demand Forecasting	Sales and Inventory Forecasting
Version Management	Basic Capacity Planning	
Agile Manufacturing	Machine Centers	
Configurations		Other
Table (10 tables)	Codeunits (10 codeunits)	Simplified Setup
Pages (100 pages)	XML Part (100 XML ports)	
Advanced Financial Management		
Application Builder ⁺	Pages (100 pages)	XML Port (100 XML Ports)
Solution Developer ⁺	Reports (100 reports)	Queries (100 queries)
Table (10 tables)	Codeunits (100 codeunits)	

ENRICHED SOLUTION UI – Desktop / Tablet / Mobile



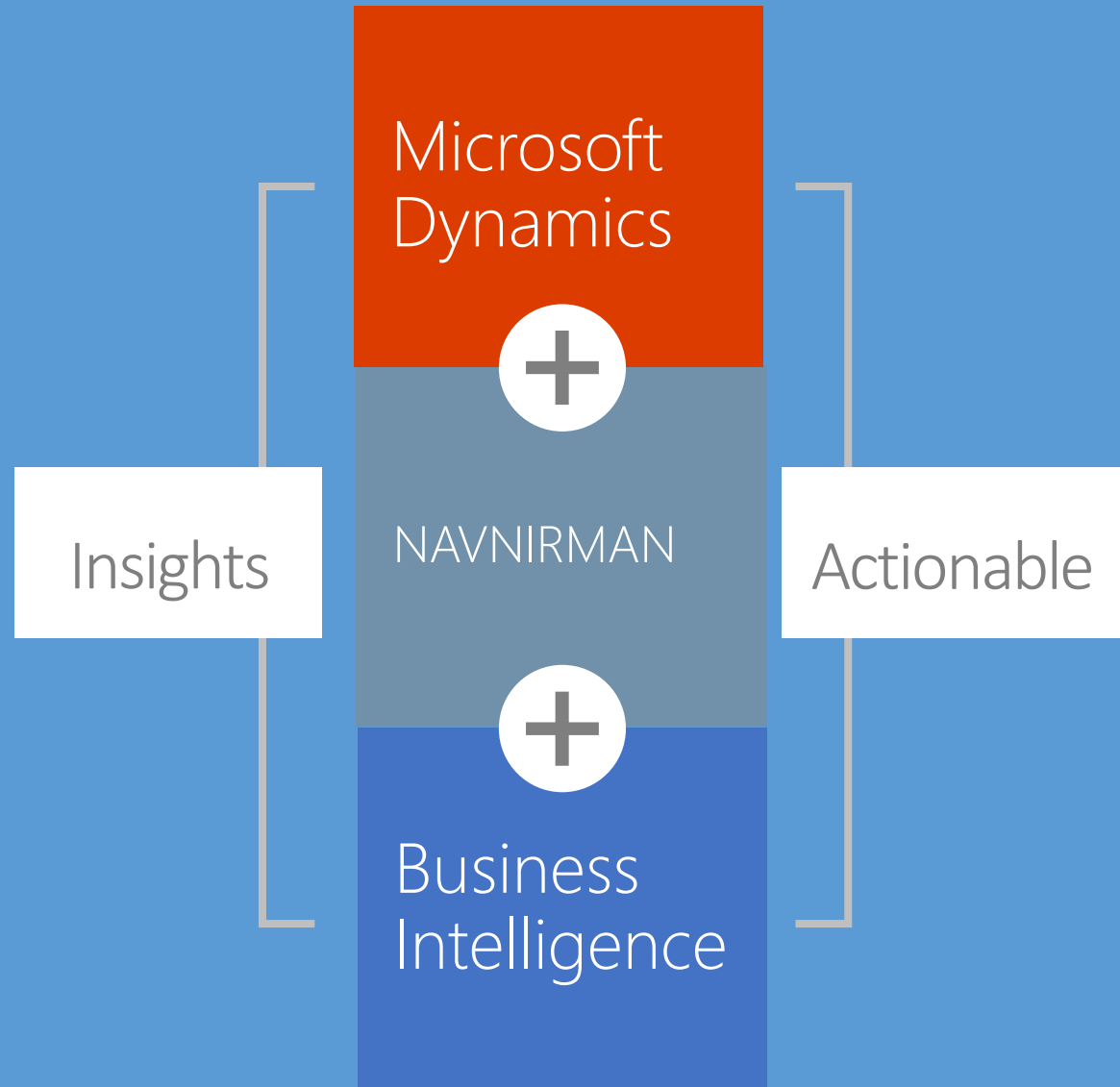
Managing your projects could not be simpler and cost effective.

Project Management

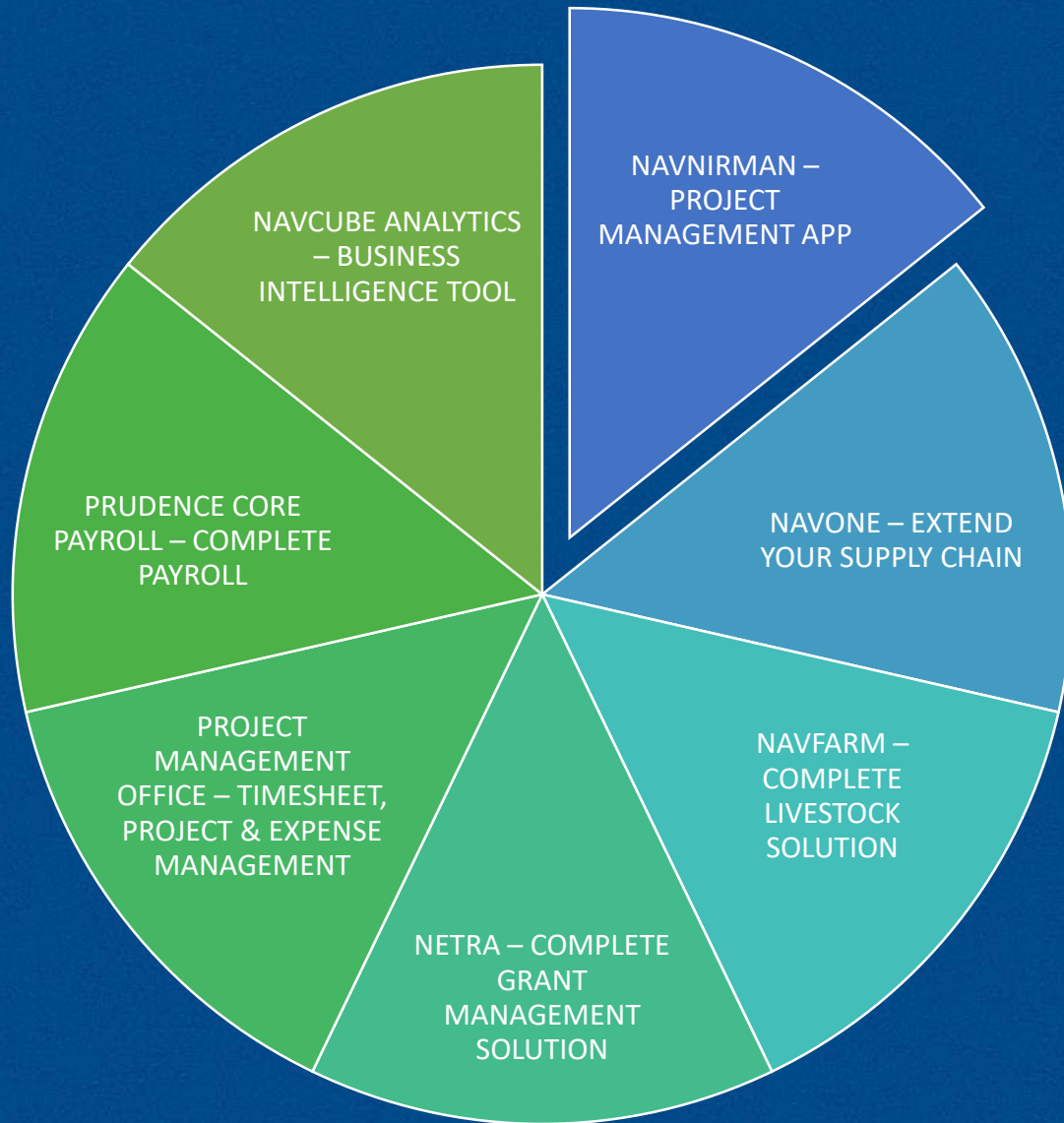
Email: marketing@prudencesoftech.com

Web: www.prudencesoftech.com

[LinkedIn](#) | [Twitter](#) | [Facebook](#)



OTHER ADD ON SOLUTION



- SEAMLESSLY INTEGRATED
- REAL TIME INFORMATION
- COMPLETELY SECURED
- NO ADDITIONAL LICENSE PROCUREMENT
- MOBILE APP ENABLED
- AVAILABLE IN SUBSCRIPTION BILLING
- ROLE MATRIX DEFINITIONS

For more information log in at www.prudencesoftech.com

PRUDENCE TECHNOLOGY FOOTPRINT



Headquartered in California, USA



09

years of experience

Youngest and Most dynamics partner in the eco system with solution driven success story

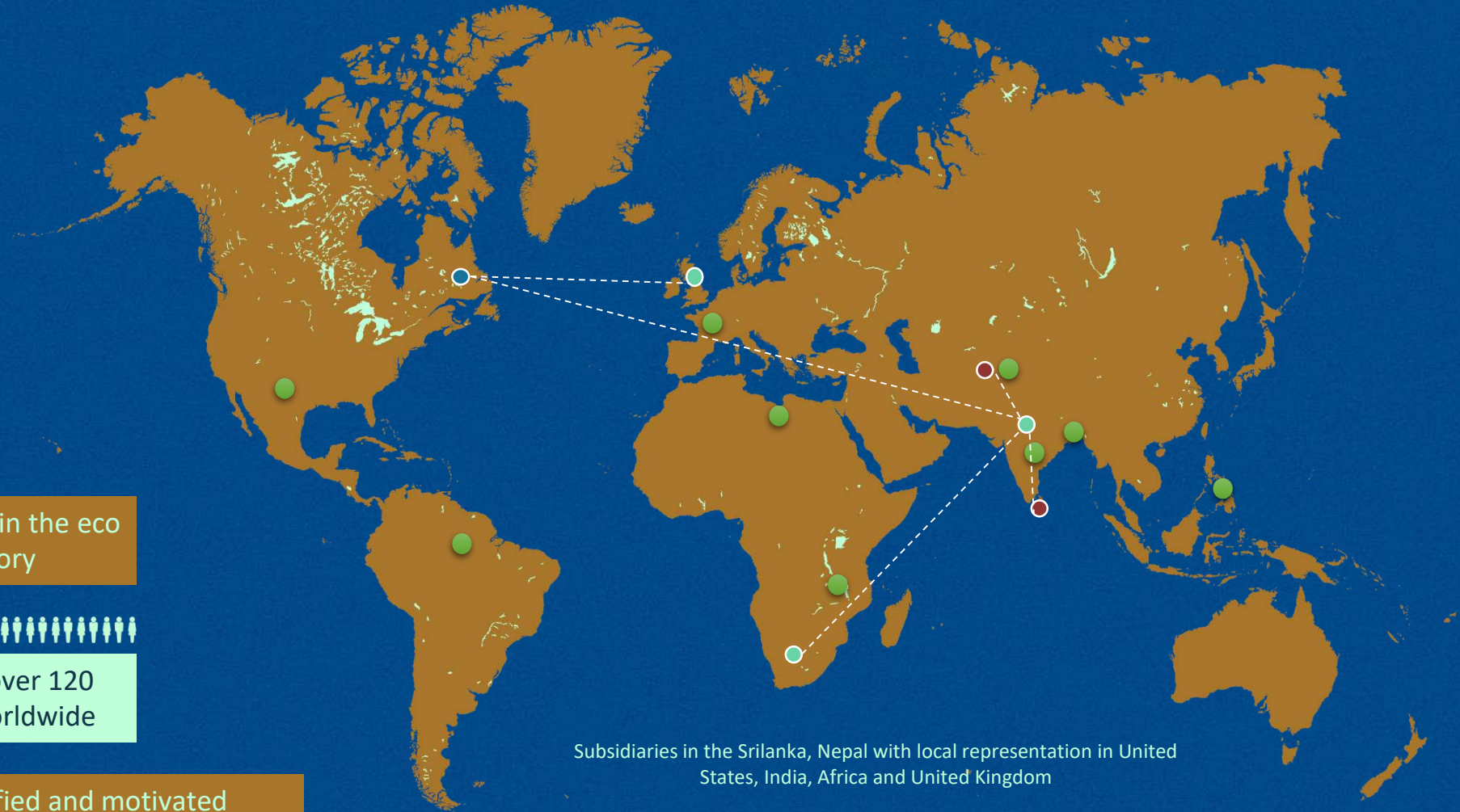
Oracle & Microsoft Dynamics Partner Worldwide



Employs over 120 people worldwide

7 Custom Solution Developed for On Premise & Cloud

Highly qualified and motivated workforce with over 90% educated to at least degree level



Subsidiaries in the Srilanka, Nepal with local representation in United States, India, Africa and United Kingdom

